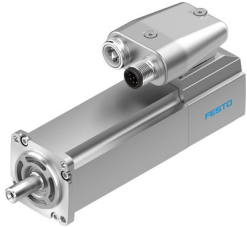


# Servo motor EMME-AS-40-S-LV-ASB

Part number: 2082430

FESTO



## Data sheet

Feature	Value
Type code	EMME-AS
Ambient temperature	-10 °C ... 40 °C
Storage temperature	-20 °C ... 70 °C
Relative air humidity	0 - 90 %
Conforms to standard	IEC 60034
Insulation protection class	F
Rating class according to EN 60034-1	S1
Degree of protection	IP21
Electrical connection technology	Plug
Note on materials	RoHS-compliant
Corrosion resistance class (CRC)	0 - No corrosion stress
LABS conformity	VDMA24364 zone III
Certification	RCM compliance mark c UL us - Recognized (OL)
CE marking (see declaration of conformity)	As per EU EMC directive As per EU low voltage directive
Nominal operating voltage DC	360 V
DC nominal voltage	360 V
Type of winding switch	Star inside
Number of pole pairs	2
Stall torque	0.18 Nm
Nominal torque	0.12 Nm
Peak torque	0.7 Nm
Nominal rotary speed	9000 1/min
Max. rotational speed	10000 1/min
Motor nominal power	110 W
Continuous stall current	0.8 A
Motor nominal current	0.7 A
Peak current	3.2 A
Motor constants	0.171 Nm/A
Voltage constant, phase-to-phase	13.5 mVmin
Phase-phase winding resistance	25.6 Ohm
Winding inductance phase-phase	9.95 mH
Total output inertia moment	0.055 kgcm <sup>2</sup>
Product weight	650 g
Permissible axial shaft load	12 N

Feature	Value
Permissible radial shaft load	105 N
Rotor position sensor	Absolute encoder, single-turn
Rotor position sensor interface	HIPERFACE®
Rotor position sensor measuring principle	Capacitive
Rotor position encoder, sinusoidal/cosinusoidal periods per revolution	16
Typical rotor position sensor resolution	12 bit
Rotor position encoder, typical angular accuracy	20 arcmin
Brake holding torque	0.4 Nm
Brake DC operating voltage	24 V
Brake power consumption	8 W
Brake mass moment of inertia	0.014 kgcm <sup>2</sup>
Switching cycles, holding brake	5 million idle actuations (without friction work!)
MTTF, subcomponent	371 years, holding brake
MTTFd, subcomponent	340 years, rotor position sensor